

ROLAND VERSAWORKS™ ADVANCED RIP SOFTWARE

Simply. Powerful.



Get the most out of your Roland.

Developed by Roland exclusively for Roland devices, VersaWorks™ adds powerful productivity tools to a robust software RIP with an easy-to-use interface that allows even novice users to take full advantage of the many capabilities of our printers and printer/cutters.

Powerful doesn't have to mean complicated. We know what goes into our machines...and what it takes to get the most out of them as quickly and easily as possible. Our powerful software RIP was written from the ground up to be easy to use and still offer advanced features. Menus and controls are intuitive, and most of the functions can be accessed from the main window.

VersaWorks supports the Roland Color system, which accurately reproduces spot colors from color charts and swatch books including metallic colors. With VersaWorks, users can choose from a variety of print options including a high-speed mode for production banner printing, the MAX Impact preset for vivid outdoor graphics and Artistic mode for exceptional indoor graphics.

Easy-to-use, Intuitive User Interface

All VersaWorks functions can be accessed from the main window. Drag-and-drop capabilities allow you to quickly add jobs directly from folders in your computer.

Genuine Adobe CPSI RIP Engine

In order to provide the highest level of compatibility with popular design applications, the latest version of Adobe CPSI (3019) is included. VersaWorks also supports commonly used image formats such as TIFF, JPEG, EPS, PostScript and PDF.

Advanced Imaging Technology and Color Management

VersaWorks is designed to deliver the best image quality. Period. The 16-bit rendering engine for PostScript 3 gradient fills ensures incredibly smooth gradations even when the design is enlarged for printing in VersaWorks. VersaWorks also features Error Diffusion, an advanced halftoning method that calculates the optimal dot placement on the fly instead of using predefined dot patterns. Together with Roland Intelligent Pass Control, this new technology delivers images with the highest level of detail and contrast, producing smooth gradations and solid colors with virtually no signs of banding or artifacts at the highest print speeds.

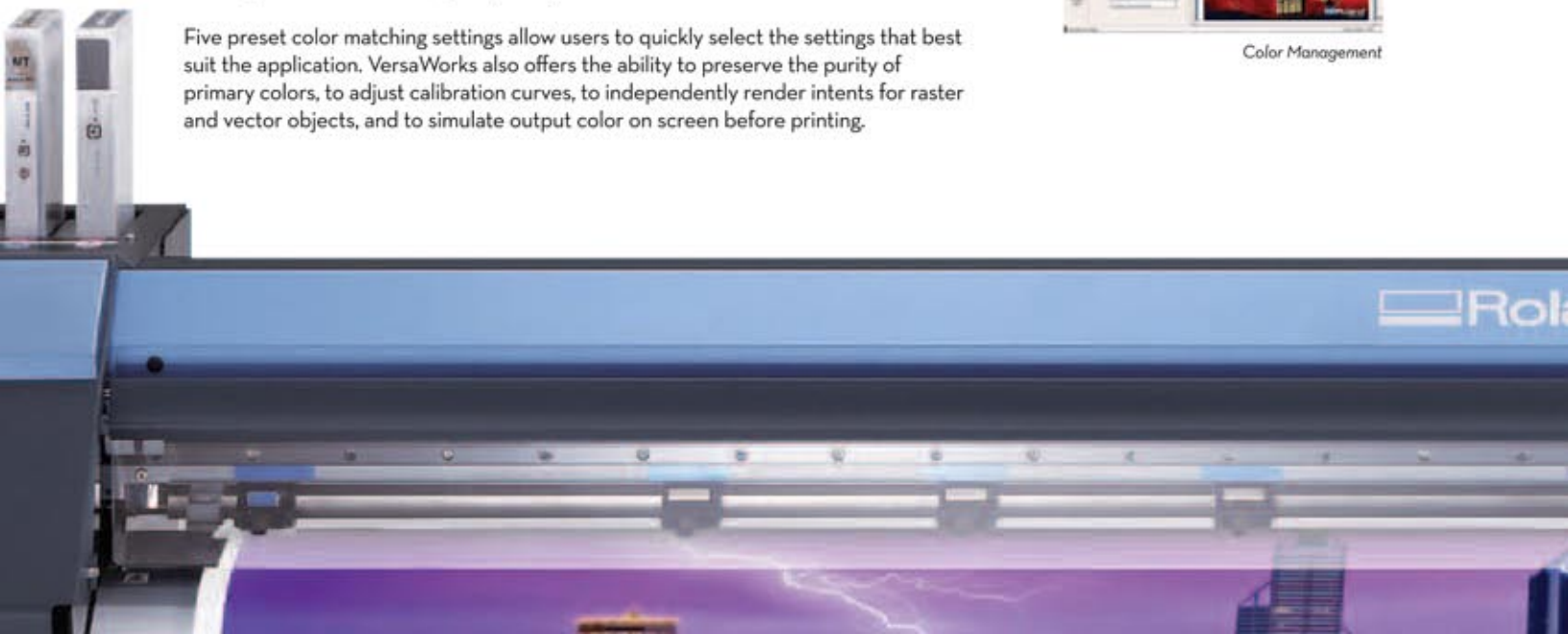
Five preset color matching settings allow users to quickly select the settings that best suit the application. VersaWorks also offers the ability to preserve the purity of primary colors, to adjust calibration curves, to independently render intents for raster and vector objects, and to simulate output color on screen before printing.



Intuitive User Interface



Color Management



VersaWorks

Roland Color System

This revolutionary spot color fidelity system allows you to quickly match logos and other corporate identity elements. Produce spot color swatch books, swatch charts and peel-and-stick swatch sheets - right on your own media. You can review these reference materials with customers to select the right color to match an established color or other vector graphic. Using Roland equipment and supplies, you can consistently print that color with 100 percent accuracy. Includes color palettes that can be imported into most popular design applications, including CorelDRAW® Graphics Suite X5. The Roland Metallic Color Library features 512 metallic spot colors. A third library supports specialized printing options for Roland's white, clear and metallic silver inks.



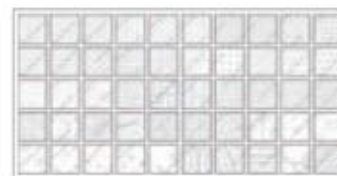
Roland Color System

Seamless Support for Integrated Printing and Cutting

Versaworks makes setting up a print/cut file as easy as selecting a spot color. Simply outline the cutting path and define it as "CutContour." Versaworks does the rest. Our PerfCut function even produces precision perforated cut lines. New features ensure accuracy during unattended print/cut runs. Support for Roland cutters allows you to pair a Roland cutter with any Roland wide-format printer for print/cut applications.

Roland Texture Library

The Roland Texture Library allows LEC and silver ink users to choose from more than 70 unique patterns and textures to be printed by layering clear coat or silver ink. Design options including ginkgo, rhombus, circular, woven patterns and more. Textures are easy to produce and supported by popular design programs including Adobe Illustrator.



Roland Texture Library

Manage Up to Four Devices Simultaneously

VersaWorks supports up to four Roland devices simultaneously including Hi-Fi Express, AdvancedJET, VersaArt, VersaCMM, VersaUV and SOLJET inkjet printers and printer/cutters and GX series cutters.



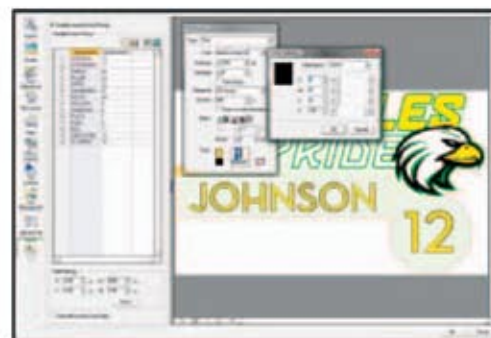
Multiple Device Management

Support for Popular Design Applications and Formats

VersaWorks RIP offers maximum compatibility with the most current popular design applications including Adobe Photoshop®, Adobe Illustrator®, and CorelDRAW®. It also supports commonly used image formats such as TIFF, JPEG, EPS, PostScript and PDF. You can print from virtually any application using the included PostScript driver.

Variable Data Printing

Variable Data Printing allows users to quickly produce a series of digital prints in which text and/or graphics change from one to the next. Ideal for point-of-purchase displays, labels, name badges, plaques, menus and other custom graphics, this powerful feature allows users to merge txt or csv data fields with a pre-defined design template to output variable text and graphic elements. Variable Data Printing supports popular design applications including CorelDRAW and Adobe Illustrator.



Variable Data Printing





Advanced Job Log Feature

VersaWorks keeps a comprehensive log of all jobs that are processed through its queues by tracking the job size, ink usage, printing time, media information and more. The log information can be exported into Microsoft Excel supported formats (csv or xml) for record keeping or further analysis such as monitoring ink and media usage.



Advanced Job Log

Full Network Support

Connect an unlimited number of clients for unattended printing throughout the network and send jobs to the server through a shared-network printer driver. VersaWorks supports full bi-directional communication with the printer, enabling users to poll the width of the media currently loaded on the printer, the remaining ink, and the current status of the printer. VersaWorks also supports printing from Macintosh clients with AppleTalk.

Advanced Layout Tools Including Tiling and Nesting

Jobs that are bigger than the media width can be easily tiled by dragging the tile border or by typing the precise parameters. Nesting optimizes media usage by allowing you to combine multiple jobs together for printing. After nesting, you can still change the position and mirror, rotate, or resize each job, or automatically rearrange jobs using the most efficient layout.



Tiling and Nesting

Media Explorer

Media Explorer is a wizard-based media management feature that allows you to create new media types, adjust the corresponding color settings for each print mode, and create custom profiles.



Media Explorer

Free Auto Updates with Roland@NET

VersaWorks ensures that you always have the most up-to-date software iteration available with free updates through Roland@NET. You can choose to have VersaWorks check periodically for software updates or printing profiles and automatically download and install the updates through an internet connection.



Roland@Net

Industry Standard ICC Profile Support

VersaWorks supports industry standard ICC profiles and comes with a number of profiles for award-winning Roland media. VersaWorks is also compatible with profiles created through standard profiling packages. Additional profiles are available through the Roland@NET service.

For more information, including video resources visit www.rolanddga.com/versaworks.

SPECIFICATIONS AND REQUIREMENTS

Operating system	Windows 7: Ultimate and Professional, Windows Vista: Ultimate and Business, Windows XP Professional Service Pack 2 and later
CPU	Dual Core 2.0 GHz or faster
Memory (RAM)	2 GB or more
Hard disk space required	40 GB or more recommended
Hard drive file system	NTFS File System
Video card and monitor	1280x1024 or higher resolution is recommended
Optical drive	DVD-ROM Drive
Other requirements	Ethernet connection for network capable printers, Available USB ports for SP-300V and GX cutters Broadband Internet connection and web browser for Roland@NET online update service

